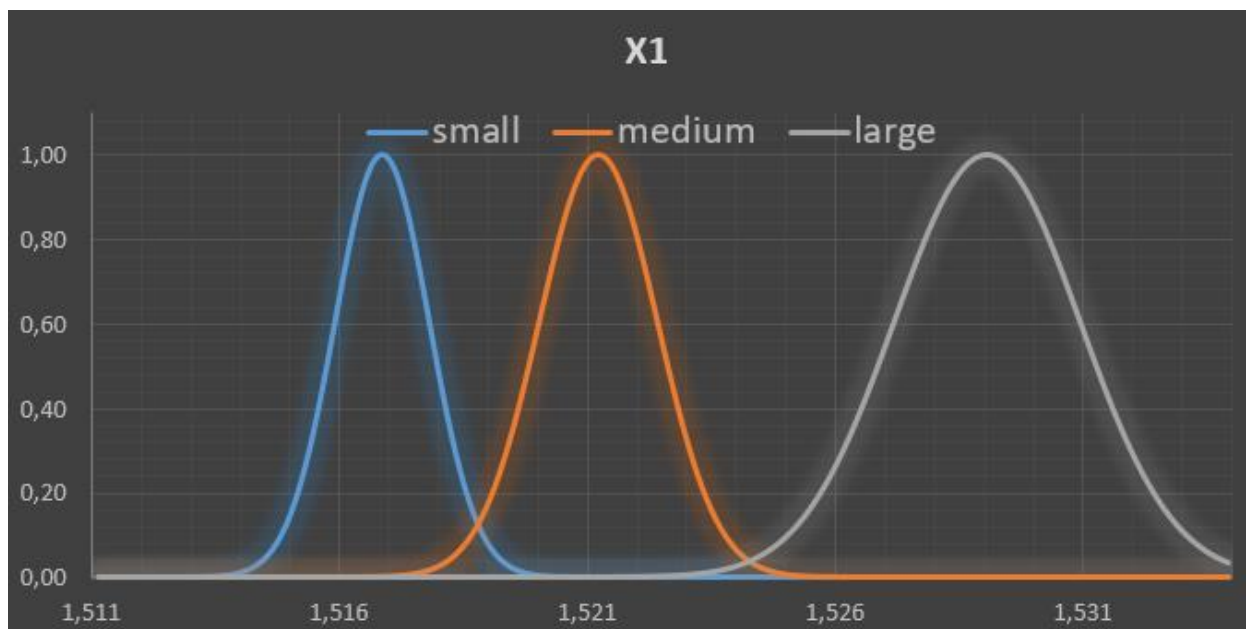


Contemporary Data Processing Technology (CCOD)

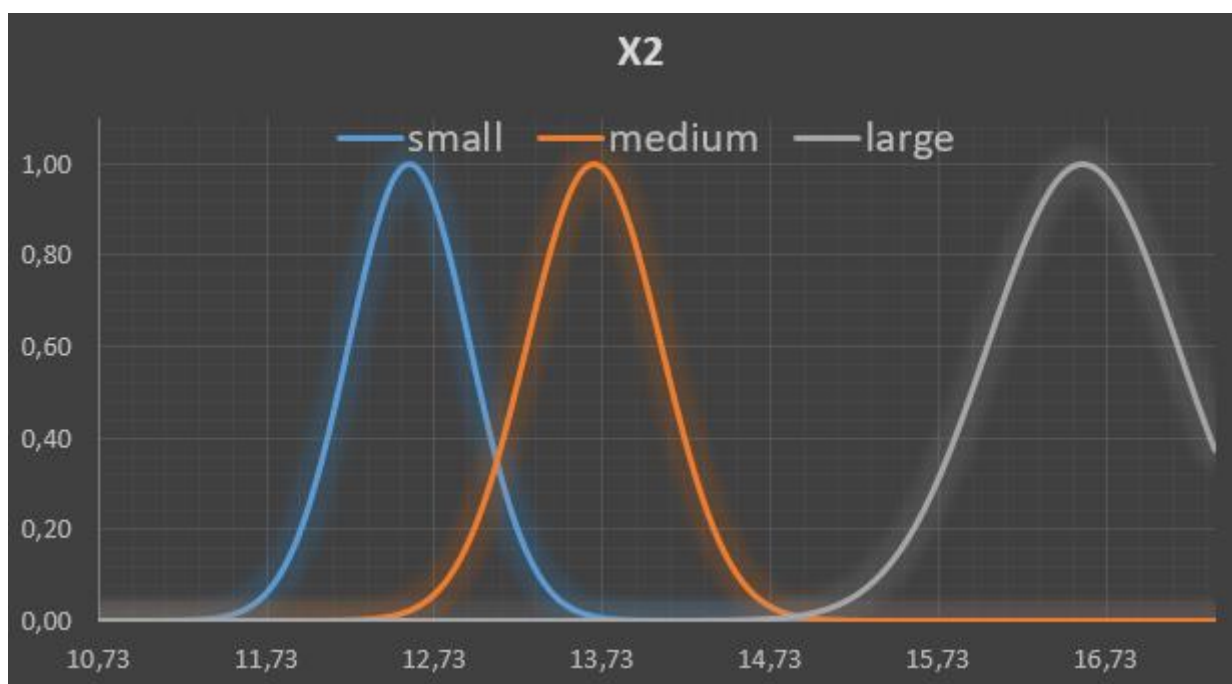
Lab 8 (October 17, 2016)

Mironchuk Vladislav, AS-36

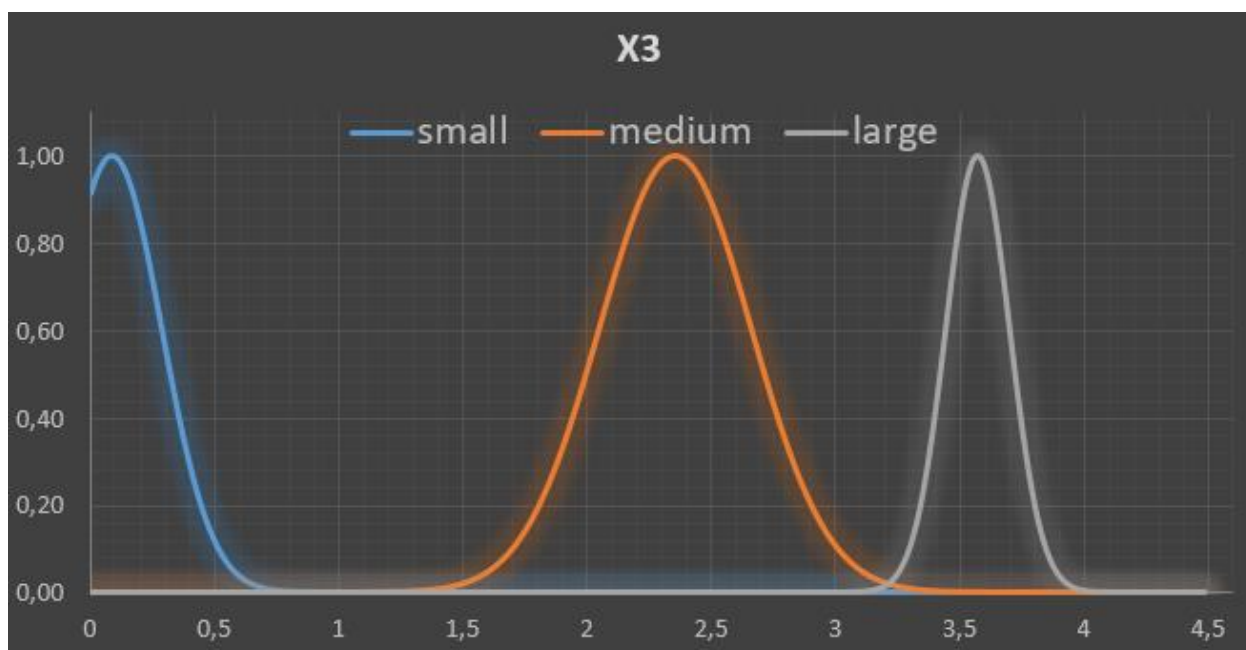
Membership function of attribute №1:



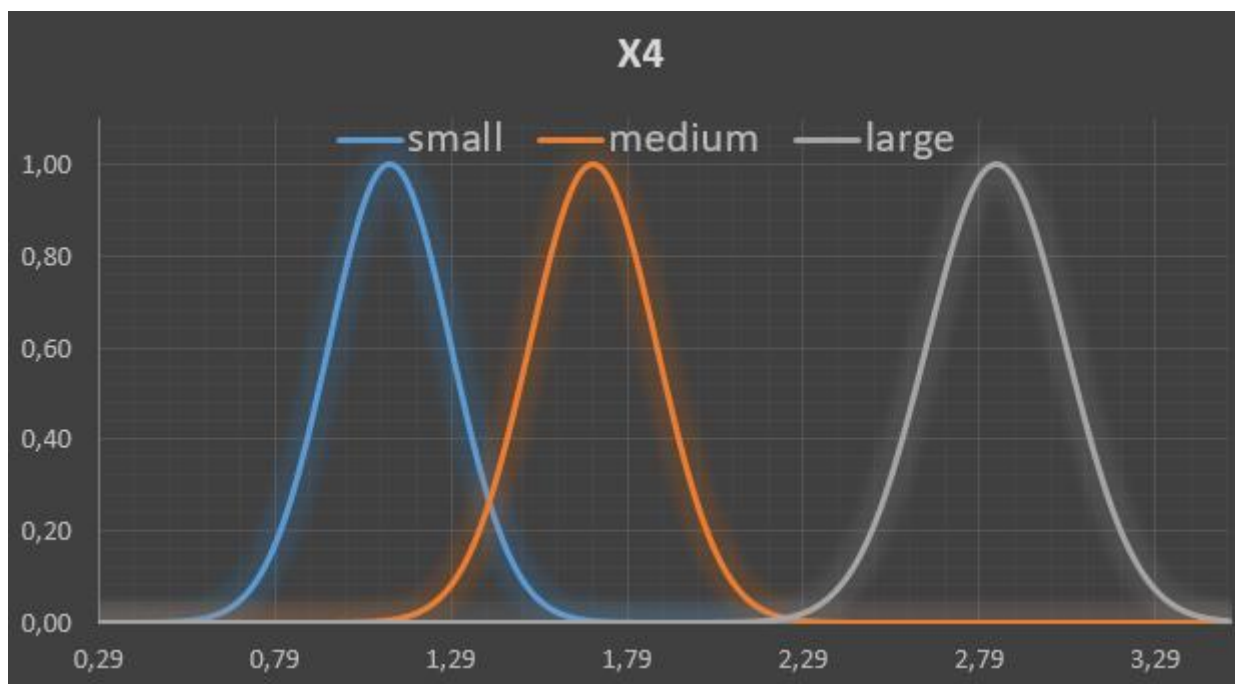
Membership function of attribute №2:



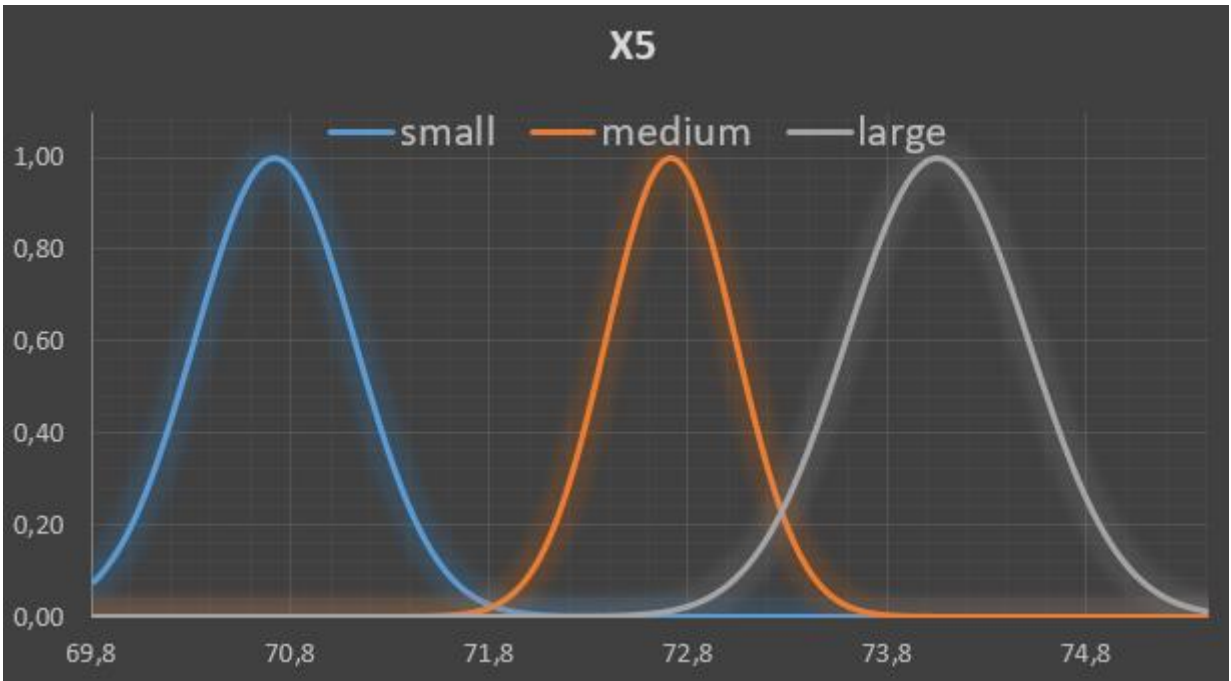
Membership function of attribute №3:



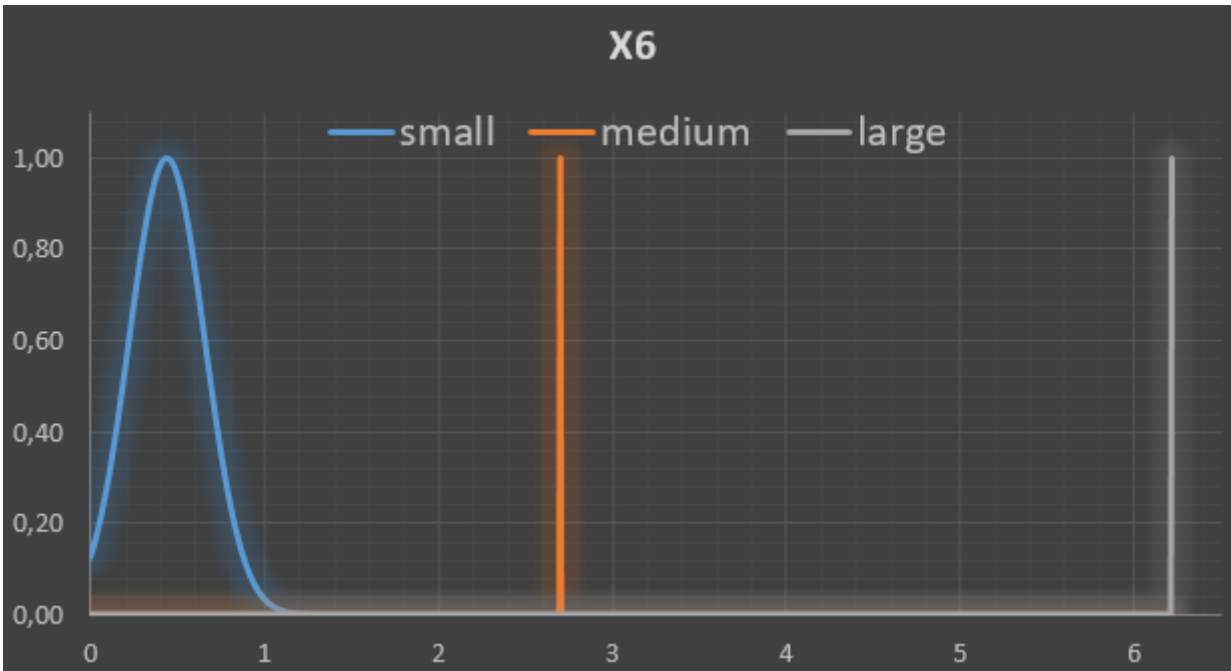
Membership function of attribute №4:



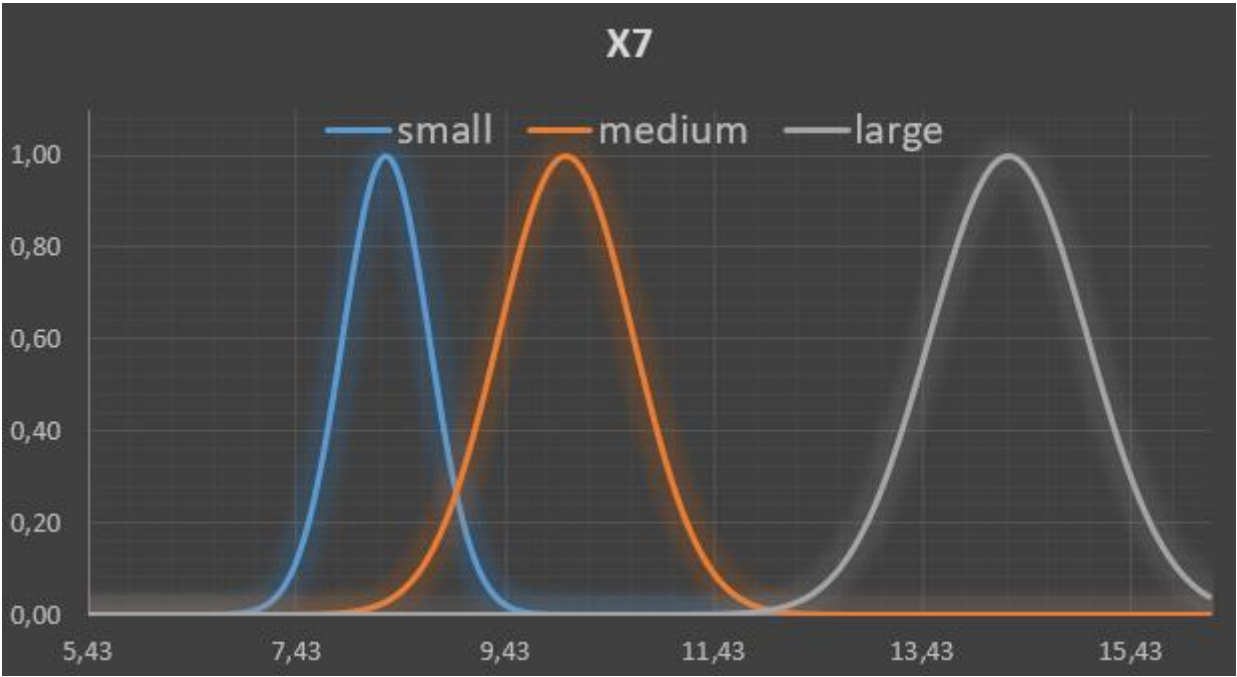
Membership function of attribute №5:



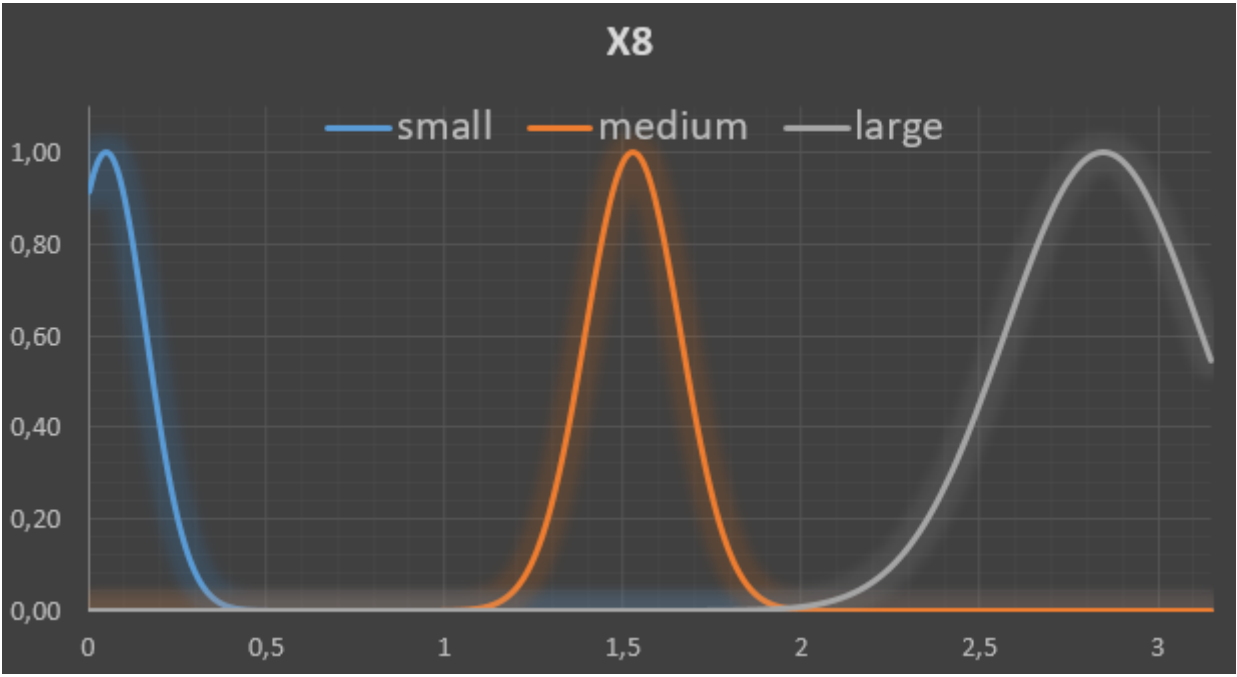
Membership function of attribute №6:



Membership function of attribute №7:



Membership function of attribute №8:



Membership function of attribute №9:

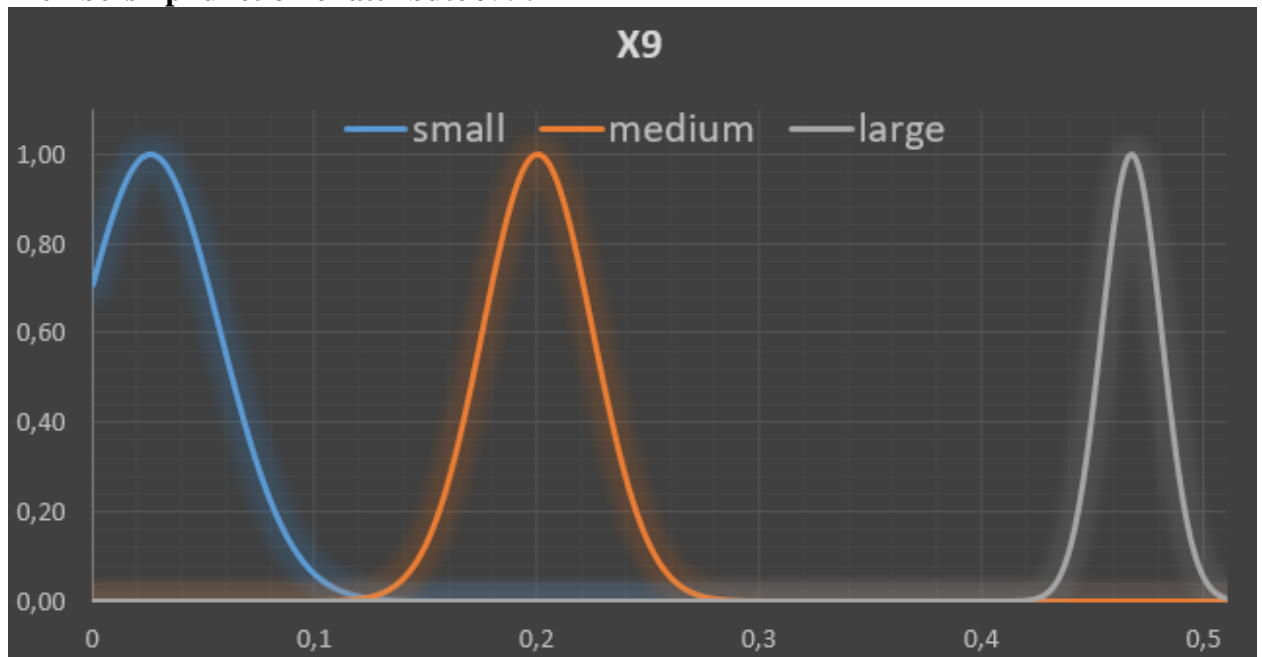


Table of rules:

if x1	and x2	and x3	and x4	and x5	and x6	and x7	and x8	and x9	then
small	small	small	small	medium	small	small	small	small	1
small	medium	large	medium	medium	small	small	small	small	2
small	medium	large	small	medium	small	small	small	small	3
medium	small	small	medium	medium	small	medium	small	small	4
small	medium	small	medium	medium	small	large	small	small	5
small	medium	small	large	large	small	small	small	small	6
large	large	small	small	small	medium	small	large	medium	other

Table of conformities:

No	Type 1	Type 2	Type 3	Type 4	Type 5	Type 6
#1	3	3	3	4	4	2
#2	3	4	3	4		6
#3	3	2				4
#4	3	2				
#5	3	2				
#6	3	4				
#7	3	3				
Success rate	0%	42,8%	100%	100%	0%	33,3%

There might have be 2 reasons for wrong results:

1. For each type of glass may be alternative rules and I've chosen not the right one
2. The data for glasses can be wrong, so the TS-formula can not recognize the right type of glass