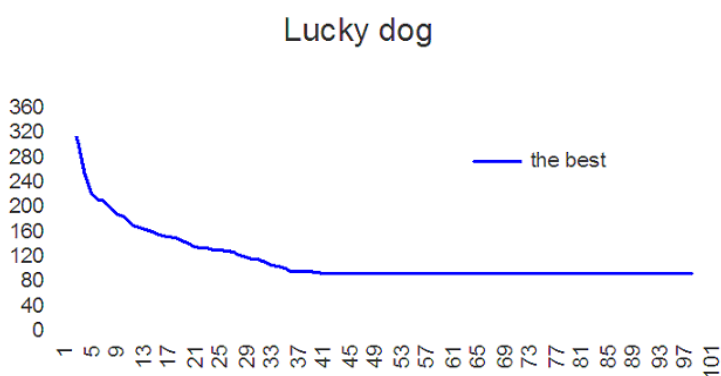


Kiryl Kiryluk

Exercise 3

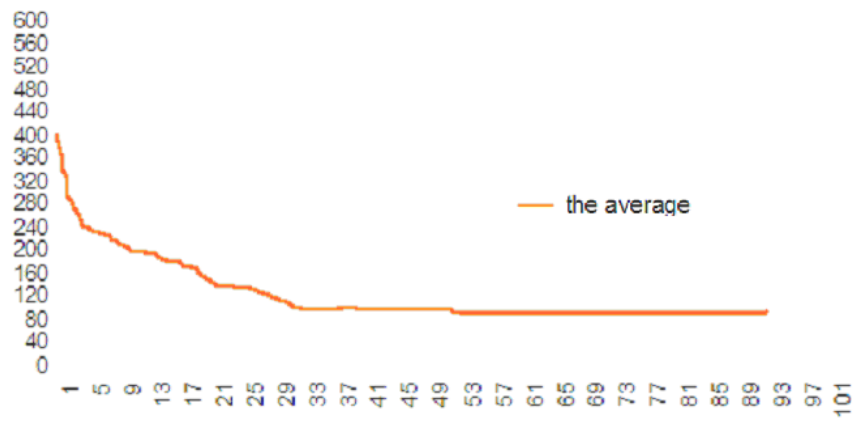
1. Simulate 100 dogs in the gridworld (0,0)-(1000,1000) with sausage at (800,800) where all dogs start from (500,500) looking for the sausage by:
 - (1) assuming all dog has a chromosome whose each of 1000 genes are 1, 2, 3 or 4,
 - (2) moving step by step according to his/her chromosome,
 - (3) with 1, 2, 3, 4 meaning a movement toward up, down, right, left, respectively.

Uniform-Crossover

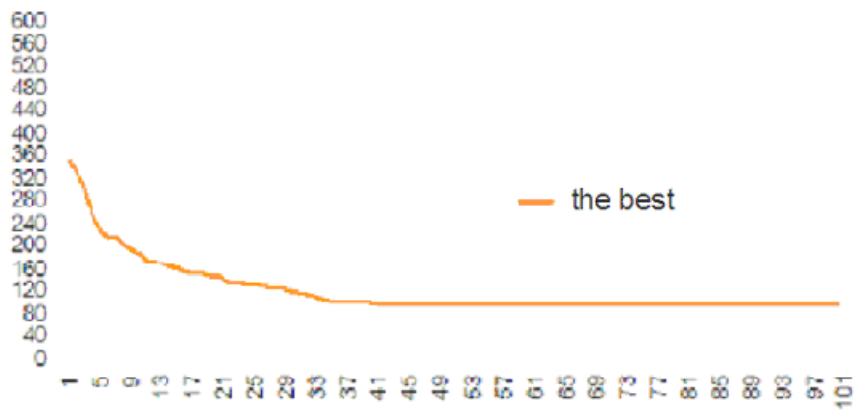


One-Point crossover

Lucky dog



Lucky dog



Lucky dog

