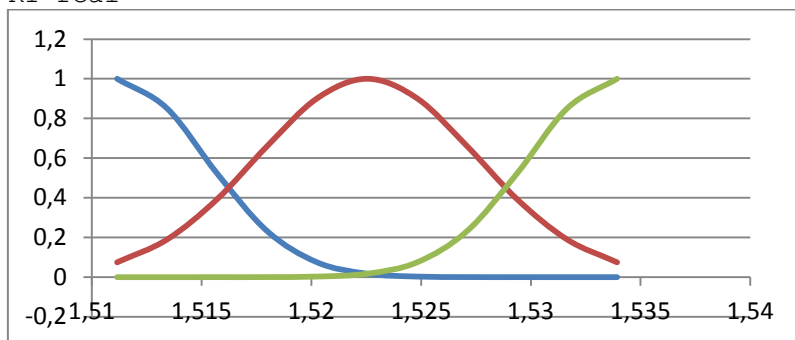
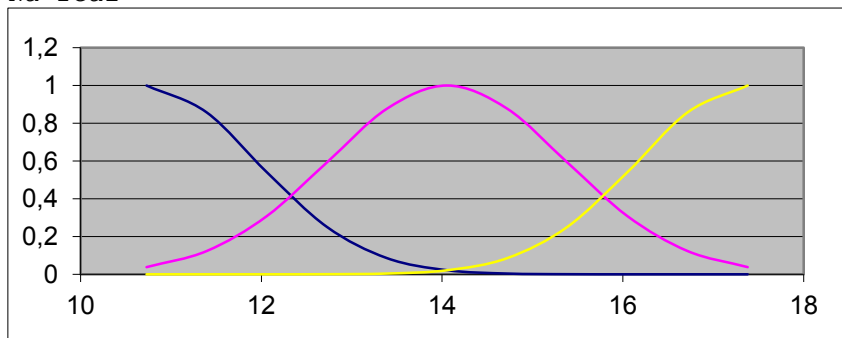


	RI	NA	MG	AL	SI	K	CA	BA	FE	RI	NA	MG	AL	SI	K	CA	B A	FE	RI	NA	MG	AL	SI	K	CA	BA	FE
	1,5158 882	12,87 795	3,430 36	1,400 66	73,28 2	0,689 31	8,044 68	0	0,12 24	1,5164 577	13,40 995	3,551 59	1,249 79	72,81 16	0,683 1	8,098 48	0	0	1,5165 261	11,94 695	0	1,188 8	75,18 04	2,701 35	8,927	0	0
	1,5176 423	12,97 77	3,538 12	1,211 27	73,00 2	0,652 05	8,528 88	0	0	1,5162 983	12,71 17	3,331 58	1,490 54	73,28 2	0,670 68	8,238 36	0	0	1,5206 493	14,36 09	0	2,020 19	73,42 2	0	8,442 8	1,641 15	0
	1,5221 3	14,20 795	3,820 99	0,469 76	71,77 2	0,111 78	9,572 6	0	0	1,5272 555	13,80 23	3,151 98	0,659 15	70,57 16	0,080 73	11,63 852	0	0	1,5113 095	13,68 925	3,201 37	1,811 54	72,81 16	1,757 43	5,43	1,190 7	0
	1,5222 211	13,21 045	3,771 6	0,790 76	71,98 84	0,130 41	10,24 52	0	0	1,5189 18	13,46 315	3,829 97	1,259 42	72,54 84	0,571 32	8,206 08	0	0,07 14	1,5155 693	13,86 88	0	2,540 21	73,23 16	0,142 83	9,411 2	0,809 55	0,00 51
	1,5175 512	13,39	3,659 35	1,188 8	72,78 92	0,571 32	8,270 64	0	0,05 61	1,5187 13	12,93 115	3,659 35	1,561 16	72,50 92	0,577 53	8,550 4	0	0,06 12	1,5163 894	14,36 755	0	2,739 23	72,85 08	0	9,454 24	0,538 65	0
	1,5209 91	13,68 925	3,592	1,121 39	71,96 04	0,086 94	9,400 44	0	0	1,5217 655	13,74 91	1,010 25	1,358 93	72,19	0,329 13	11,14 356	0	0	1,5231 551	13,44 32	3,340 56	1,230 53	72,38 04	0,602 37	8,830 16	0	0
	1,5175 512	13,15 06	3,609 96	1,050 77	73,23 72	0,571 32	8,238 36	0	0	1,5162 755	12,99 765	3,578 53	1,538 69	72,82 84	0,608 58	8,044 68	0	0	1,5154 554	14,14 145	0	2,681 45	73,38 84	0,080 73	9,066 88	0,611 1	0,02 55
	1,5191 002	13,90 205	3,731 19	1,179 17	72,12 28	0,062 1	8,894 72	0	0	1,5161 844	13,01 095	3,502 2	1,480 91	72,89	0,602 37	8,12	0	0	1,5165 033	14,38 085	0	1,939 94	73,61 24	0	8,475 08	1,568 7	0
	1,5179 384	13,21 045	3,479 75	1,410 29	72,63 8	0,589 95	8,432 04	0	0	1,5160 477	12,89 79	3,439 34	1,448 81	73,58	0,440 91	8,270 64	0	0	1,5168 222	14,56 04	0	1,978 46	73,28 76	0	8,518 12	1,568 7	0,03 57
	1,5189 863	13,58 285	3,349 54	1,230 53	72,07 8	0,589 95	8,905 48	0	0	1,5170 728	13,72 25	3,681 8	1,811 54	72,06 12	0,639 63	7,883 28	0	0	1,5164 577	14,93 945	0	1,869 32	73,10 84	0	8,668 76	1,379 7	0
	1,5121 523	12,99 1	3,470 77	1,121 39	72,97 96	0,621	8,345 96	0	0,15 81	1,5166 628	12,93 78	3,609 96	1,259 42	72,75	0,558 9	8,604 2	0	0	1,5171 867	14,75 325	0	2,000 93	73,01 88	0	8,528 88	1,590 75	0,04 08
	1,5197 608	13,80 895	3,578 53	1,320 41	71,71 96	0,117 99	8,668 76	0,689 85	0	1,5261 392	13,70 255	0	1,358 93	71,23 8	0,192 51	13,43 544	0	0,05 1	1,5161 616	14,95 275	0	2,270 57	73,29 88	0	8,711 8	0,670 95	0
	1,5176 195	13,88 875	3,600 98	1,358 93	72,72 76	0,478 17	7,829 48	0	0	1,5168 906	13,33 015	3,538 12	1,609 31	72,54 28	0,683 1	8,109 24	0	0	1,5171 184	14,22 79	0	2,081 18	73,36 04	0	8,614 96	1,669 5	0
	1,5178 473	12,67 845	3,668 33	1,159 91	73,10 84	0,608 58	8,701 04	0	0	1,5164 577	13,44 32	3,609 96	1,538 69	72,39 16	0,658 26	8,033 92	0	0	1,5236 562	15,79 065	1,831 92	1,310 78	70,43 16	0,310 5	8,614 96	1,678 95	0
	1,5172 095	13,37 67	3,502 2	1,150 28	72,85 08	0,503 01	8,432 04	0	0	1,5159 338	13,25 035	3,448 32	1,429 55	73,17	0,608 58	7,861 76	0	0	1,5151 365	14,85 3	0	2,421 44	73,71 88	0	8,389 7	0,560 7	0
	1,5174 601	12,83 805	3,502 2	1,140 65	73,27 08	0,558 9	8,550 4	0	0	1,5174 373	12,19 965	3,250 76	1,159 91	73,55 08	0,621	8,894 72	0	0,12 24	1,5168 45	14,91 95	0	1,991 3	73,58	0	8,399 76	1,590 75	0
	1,5221 072	13,72 915	3,838 95	0,720 14	71,75 88	0,167 67	9,744 76	0	0	1,5247 497	11,44 82	0	1,878 95	72,19	0,807 3	13,24 176	0	0,17 34	1,5162 299	14,20 13	0	2,790 59	73,46 12	0,037 26	9,045 36	0,400 05	0,45 9
	1,5182 346	12,87 13	3,479 75	1,291 52	72,95 16	0,602 37	8,432 04	0	0	1,5182 801	13,23 705	3,901 81	1,410 29	72,33	0,552 69	8,313 68	0	0,05 1	1,5153 187	14,38 085	0	2,658 98	73,09 72	0,037 26	9,077 64	0,639 45	0
	1,5191 913	14,41 7	3,578 53	1,368 56	72,07 8	0,558 9	8,302 92	0	0	1,5178 929	13,19 05	3,901 81	1,301 15	72,33	0,552 69	8,442 8	0	0,14 28	1,5160 933	15,12 6	0	2,511 32	73,05 24	0,049 68	8,830 16	0,529 2	0
	1,5176 195	12,79 815	3,659 35	1,269 05	73,00 76	0,602 37	8,561 16	0	0	1,5183 94	12,85 135	3,668 33	1,240 16	72,57 08	0,621	8,679 52	0	0,17 85	1,5183 029	14,38 75	0	1,821 17	72,86 2	1,409 67	6,473 72	2,879 1	0
	1,5175 056	12,81 145	3,569 55	1,349 3	73,01 88	0,621	8,593 44	0	0	1,5159 338	13,09 075	3,592 43	1,519 72	73,09 72	0,670 68	7,829 48	0	0	1,5160 249	14,85 3	0	2,379 71	73,28 2	0	8,754 84	0,639 45	0,45 9
	1,5178 245	12,69 175	3,538 12	1,339 67	72,95 16	0,571 32	8,754 84	0	0	1,5159 338	13,09 075	3,520 16	1,551 53	72,86 76	0,683 1	8,044 68	0	0,45 9	1,5172 778	14,70 005	0	2,341 19	73,28 2	0	8,948 52	0,661 5	0
	1,5179 384	12,79 15	3,502 2	1,121 39	73,03	0,639 63	8,765 6	0	0	1,5158 882	13,11 735	3,407 91	1,580 42	73,25 96	0,068 31	8,389	0	0,09 69	1,5162 299	14,14 145	0	2,880 47	72,61	0,080 73	9,185 24	1,061 55	0
	1,5183 713	13,13 73	2,842 17	1,278 68	72,85 08	0,552 69	9,066 88	0	0	1,5181 89	12,61 86	2,761 35	0,829 28	73,80 84	0,347 76	9,421 96	0	0,10 2	1,5183 713	14,32 1	3,259 74	2,219 21	71,24 92	1,459 35	5,785 08	1,628 55	0
	1,5215 149	13,05 085	3,650 37	0,871 01	72,21 8	0,192 51	9,852 36	0	0,08 67	1,5184 624	13,09 74	3,969 16	1,188 8	72,44 2	0,602 37	8,432 04	0	0	1,5165 716	14,79 98	0	1,991 3	73,10 84	0	8,281 4	1,710 45	0

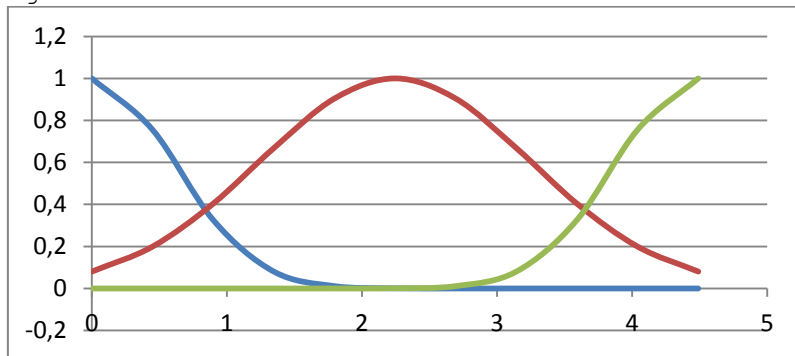
RI real



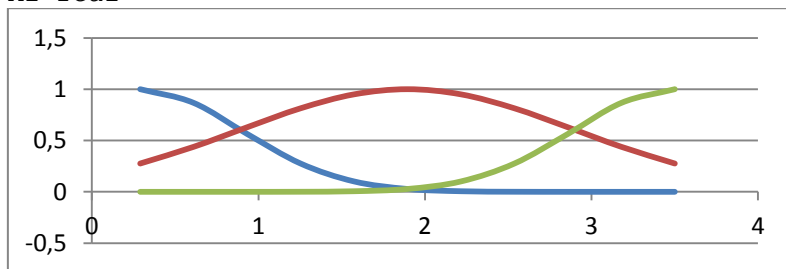
Na real



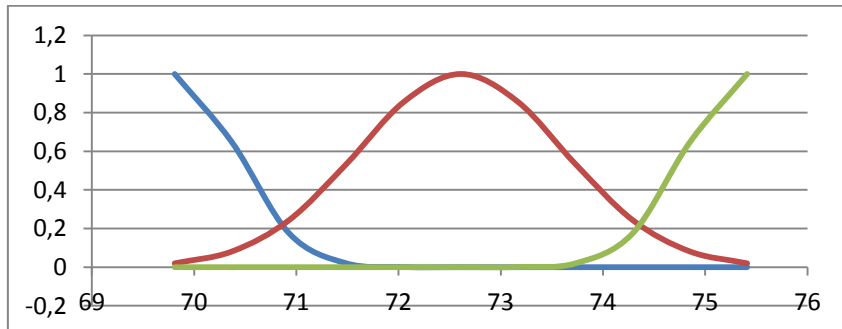
Mg real



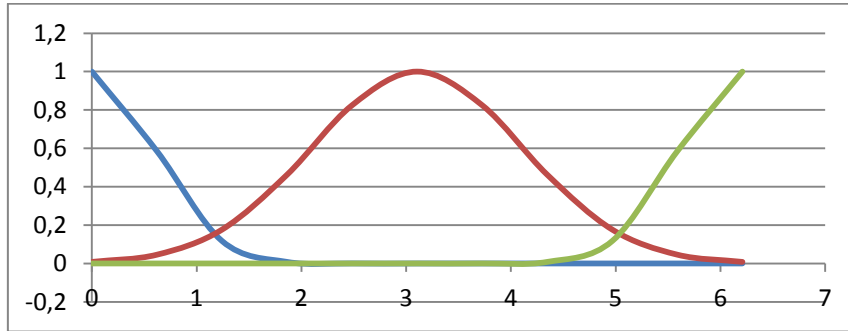
Al real



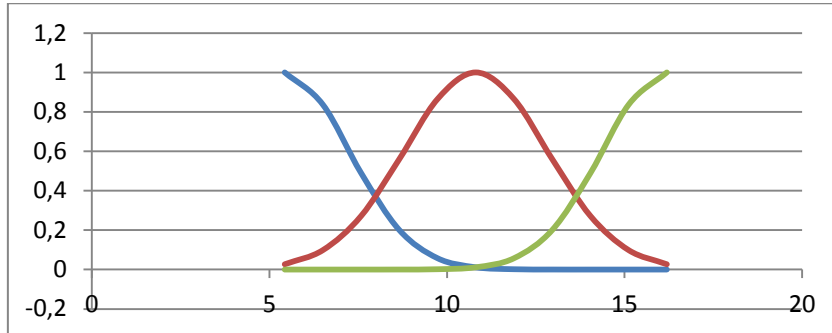
Si real



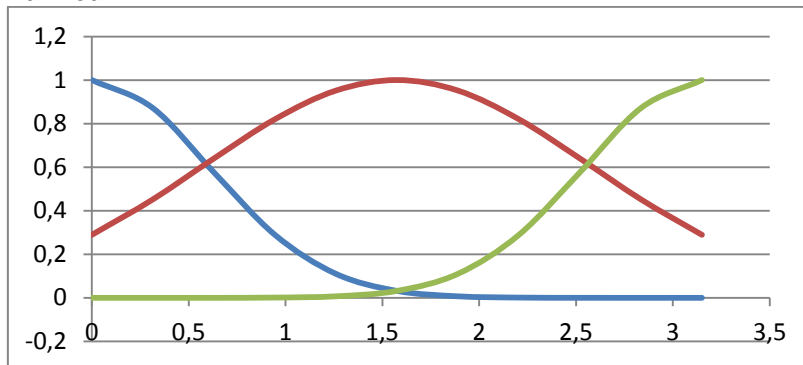
K real



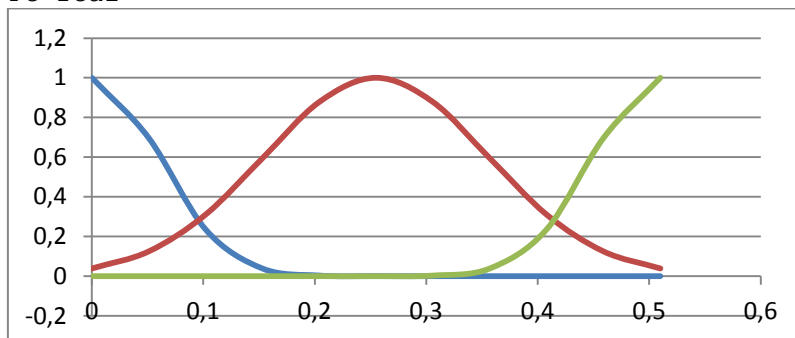
Ca real



Ba real



Fe real



Rules									
IF X1 =	AND X2 =	AND X3 =	AND X4=	AND X5=	AND X6=	AND X7=	AND X8=	AND X9=	THEN
medium	small	large	medium	large	medium	large	small	small	1
medium	large	small	large	medium	large	small	large	medium	1
large	small	large	medium	large	medium	large	medium	large	2
small	medium	small	small	medium	large	medium	small	large	2
small	medium	medium	large	small	small	medium	large	medium	3

large	large	medium	small	small	small	small	medium	small	3
Y	Class	Resault	Y	Class	Resault	Y	Class	Resault	
1,000115	RI_real	Yes	1,00028	RI_real	No	2	CA_real	Yes	
1,000453	RI_real	Yes	1,000161	RI_real	No	2,000237	CA_real	Yes	
1,150679	RI_real	Yes	2,634917	NA_real	Yes	1,00957	RI_real	No	
1,015495	RI_real	Yes	1,001547	RI_real	No	2	CA_real	Yes	
1,000558	RI_real	Yes	1,00102	RI_real	No	2,000001	CA_real	Yes	
1,019098	RI_real	Yes	2,00671	CA_real	No	1,080725	RI_real	No	
1,00045	RI_real	Yes	1,000147	RI_real	No	2	CA_real	Yes	
1,006407	RI_real	Yes	1,000145	RI_real	No	2,000001	CA_real	Yes	
1,000737	RI_real	Yes	1,00013	RI_real	No	2,000002	CA_real	Yes	
1,006004	RI_real	Yes	1,000775	RI_real	No	2,000002	CA_real	Yes	
1,000082	RI_real	Yes	1,000194	RI_real	No	2,000004	CA_real	Yes	
1,011978	RI_real	Yes	2,113593	CA_real	No	2,000001	CA_real	Yes	
1,002771	RI_real	Yes	1,00035	RI_real	No	2,000001	CA_real	Yes	
1,000488	RI_real	Yes	1,000269	RI_real	No	2,997932	NA_real	No	
1,000526	RI_real	Yes	1,000175	RI_real	No	2	CA_real	Yes	
1,000375	RI_real	Yes	1,000354	RI_real	No	2,000004	CA_real	Yes	
1,027478	RI_real	Yes	2,000069	CA_real	No	2	CA_real	Yes	
1,000716	RI_real	Yes	1,00075	RI_real	No	2	CA_real	Yes	
1,100792	RI_real	Yes	1,000538	RI_real	No	2,000002	CA_real	Yes	
1,000411	RI_real	Yes	1,000776	RI_real	No	2,000009	CA_real	Yes	
1,00038	RI_real	Yes	1,000117	RI_real	No	2,000001	CA_real	Yes	
1,000486	RI_real	Yes	1,000125	RI_real	No	2,000004	CA_real	Yes	
1,000547	RI_real	Yes	1,000153	RI_real	No	2	CA_real	Yes	
1,009862	RI_real	Yes	1,006086	RI_real	No	1,124265	RI_real	No	
1,009038	RI_real	Yes	1,000823	RI_real	No	2,000002	CA_real	Yes	