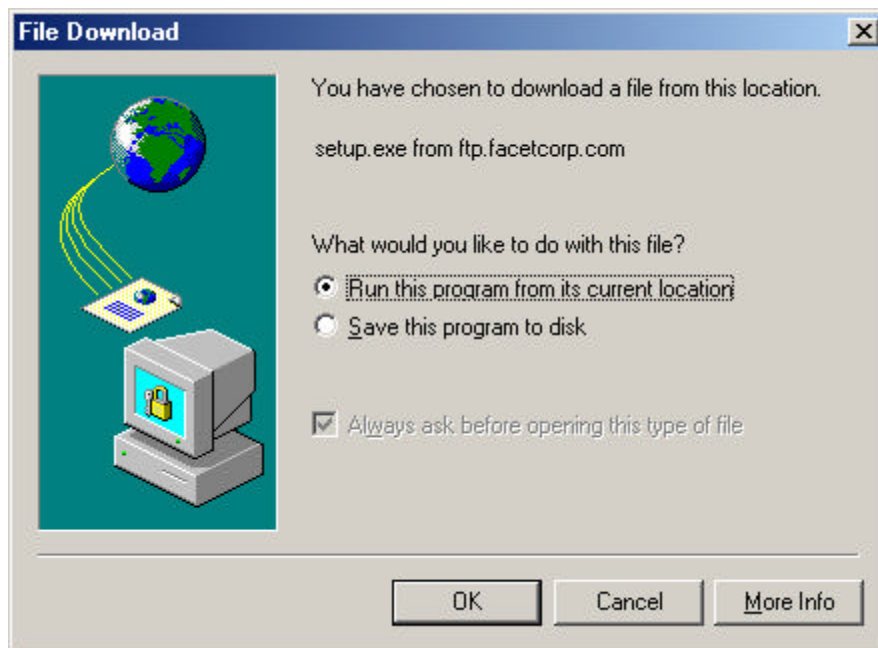


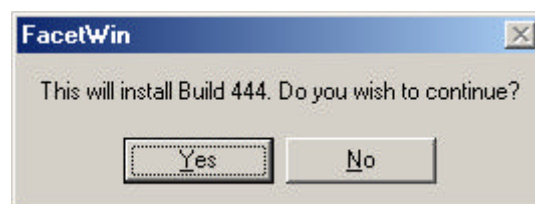
1. Download the FacetWin Emulation Software from the FacetCorp ftp site by typing the following in your Internet browser address field:

<ftp://ftp.facetcorp.com/evals/facetwin/fwt/setup.exe>

The following window will pop up. Be sure that 'Run this program from its current location' is checked and then click 'OK'.



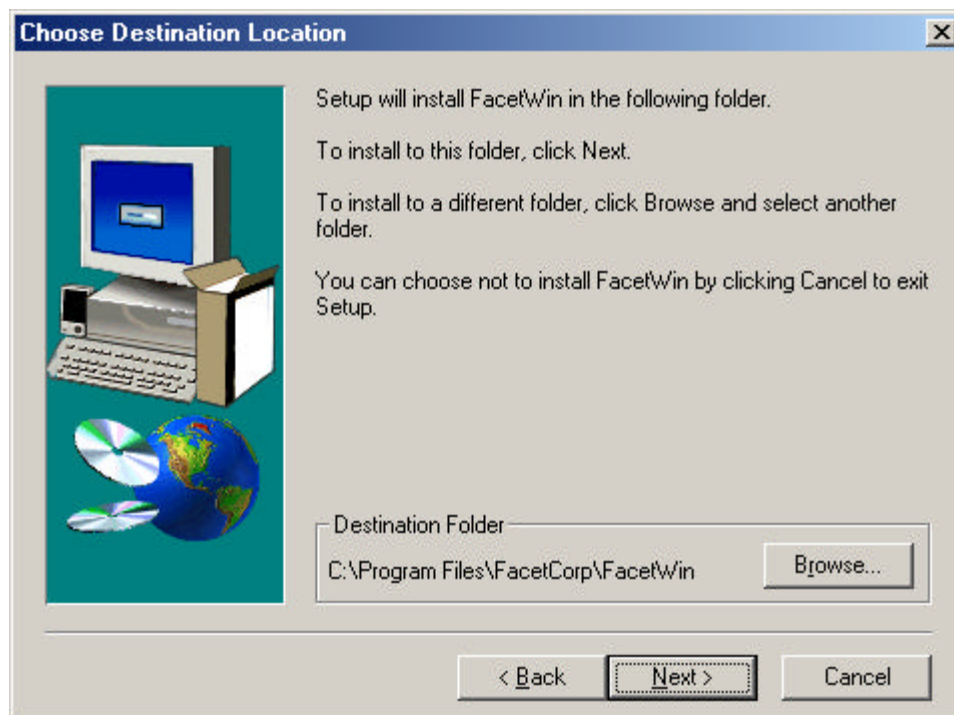
2. You will see a download dialog box briefly while the FacetWin software is transferred to your PC. You will be prompted to begin the FacetWin installation. Click 'Yes'.



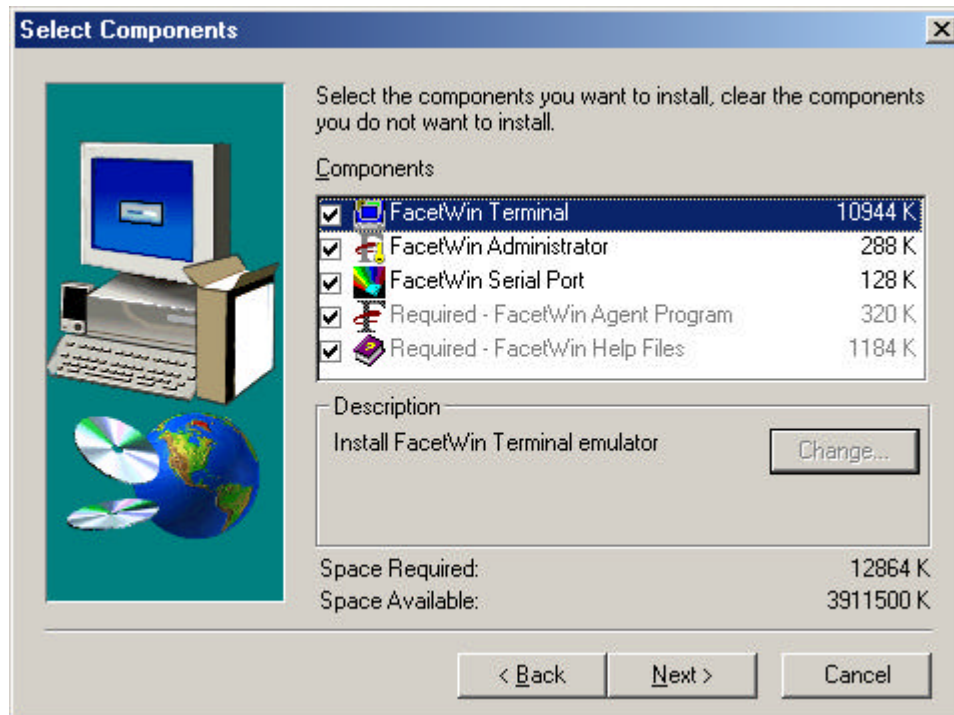
3. Be sure there are no other programs running on your system and click 'Next' to continue.



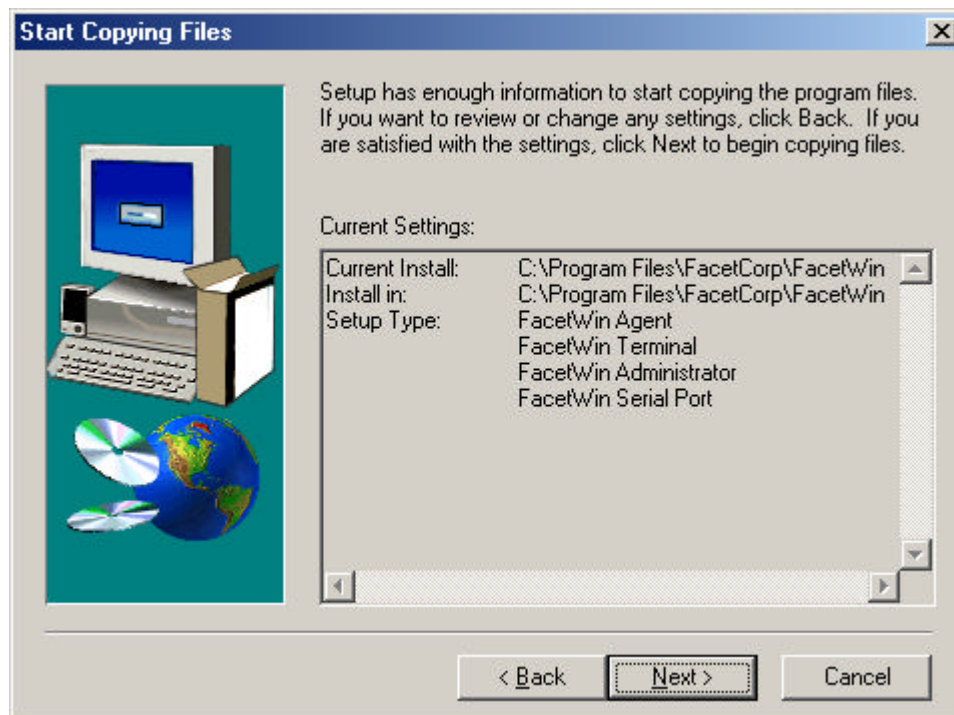
4. DO NOT CHANGE THE DESTINATION FOLDER. Click 'Next' to continue.



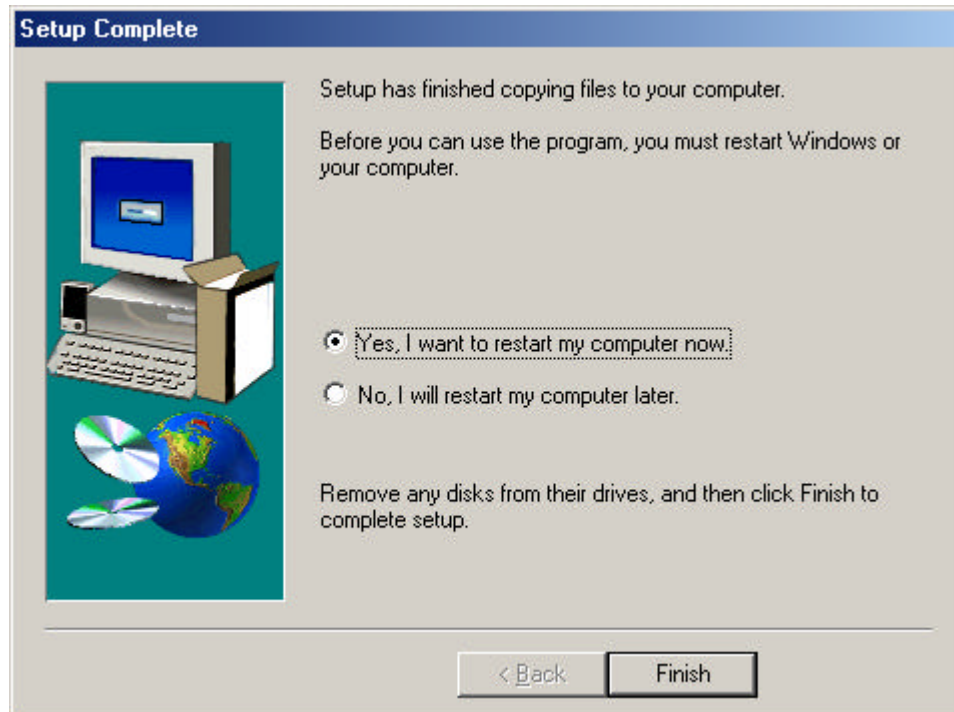
5. Click 'Next' to proceed with the installation at the following window.



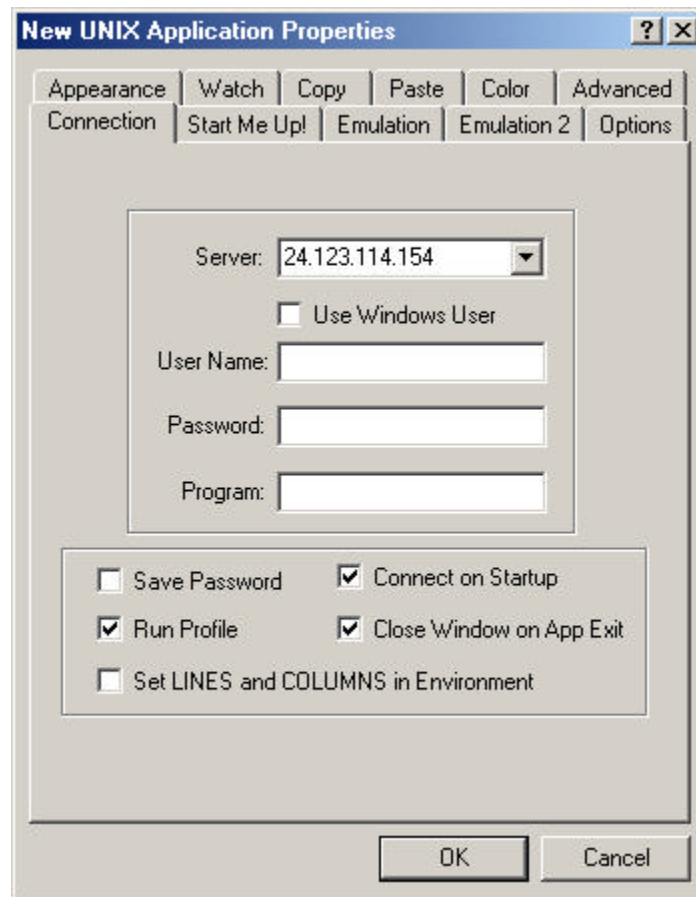
6. Click 'Next' to begin the installation of the FacetWin software.



7. You may see a final window prompting you to restart your PC or a window stating that the installation is complete. In either case click 'Finish' to complete the installation.

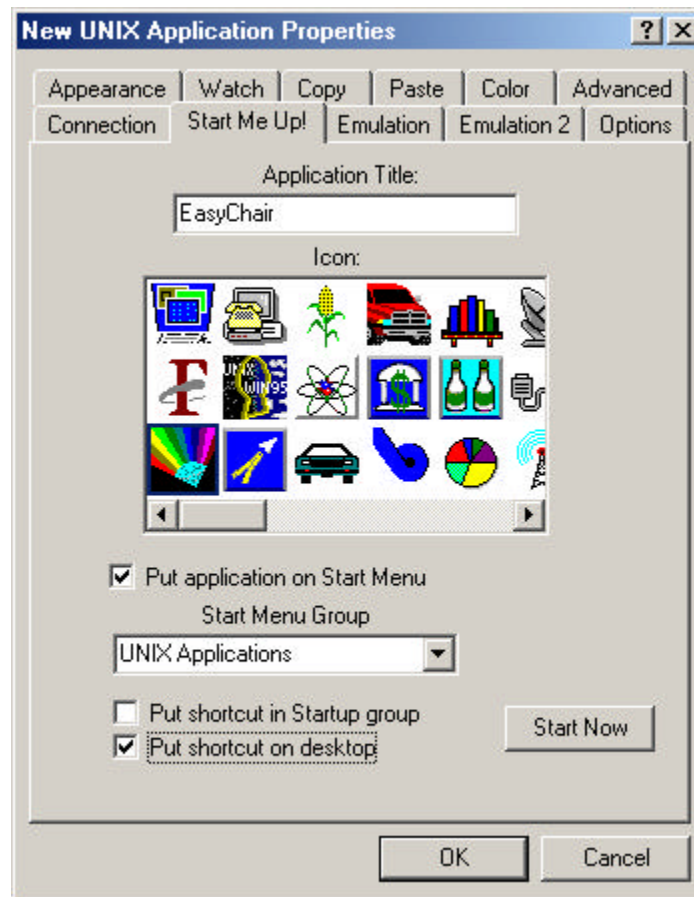


8. To configure FacetWin for your EasyChair Online Demo: click on 'Start', then 'programs', 'FacetWin', 'Add a Unix Application'. You will then see the following window. Make your window match the following example:

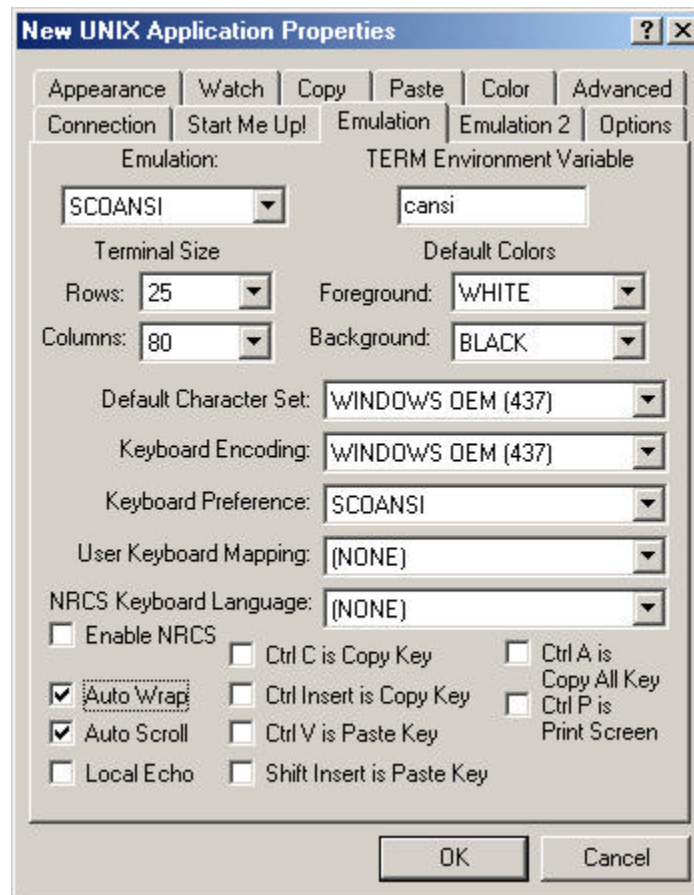


The image shows a 'New UNIX Application Properties' dialog box. It has a title bar with a question mark and a close button. Below the title bar are two rows of tabs: 'Appearance', 'Watch', 'Copy', 'Paste', 'Color', 'Advanced' in the first row, and 'Connection', 'Start Me Up!', 'Emulation', 'Emulation 2', 'Options' in the second row. The 'Connection' tab is selected. Inside the dialog, there is a 'Server:' label followed by a text box containing '24.123.114.154' and a dropdown arrow. Below this is a checkbox labeled 'Use Windows User' which is unchecked. Then there are three text boxes labeled 'User Name:', 'Password:', and 'Program:'. At the bottom, there is a group box containing five checkboxes: 'Save Password' (unchecked), 'Run Profile' (checked), 'Set LINES and COLUMNS in Environment' (unchecked), 'Connect on Startup' (checked), and 'Close Window on App Exit' (checked). At the very bottom are 'OK' and 'Cancel' buttons.

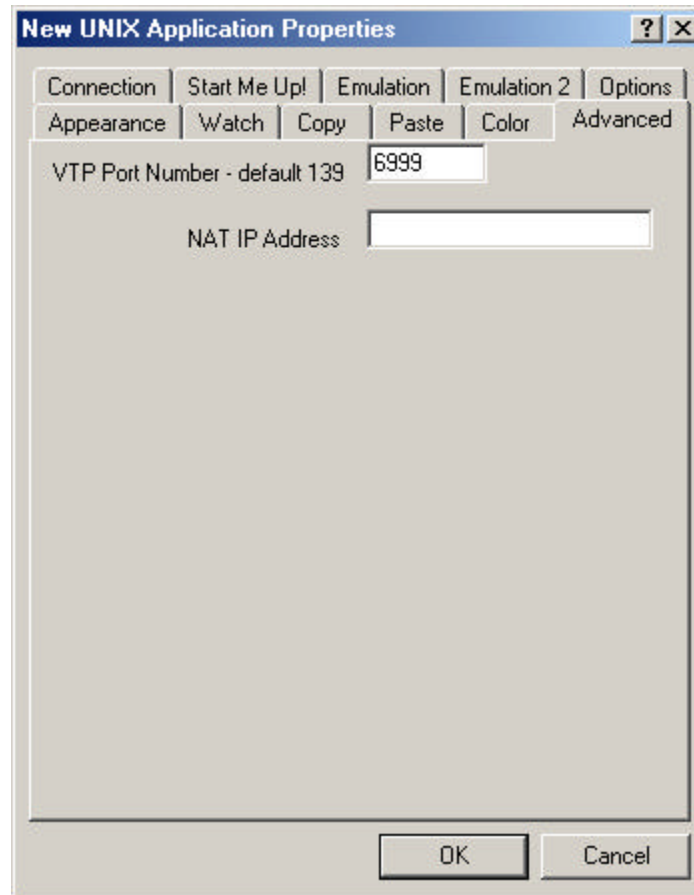
Tab	Server	Use Windows User	User Name	Password	Program	Save Password	Run Profile	Set LINES and COLUMNS in Environment	Connect on Startup	Close Window on App Exit
Connection	24.123.114.154	<input type="checkbox"/>				<input type="checkbox"/>	<input checked="" type="checkbox"/>	<input type="checkbox"/>	<input checked="" type="checkbox"/>	<input checked="" type="checkbox"/>



9. Click on the 'Start Me Up' tab. Complete your screen so that it appears exactly like the example above. Be sure to click on the 'Icon' with the diamond and rainbow.



10. Click on the 'Emulation' tab. Complete your screen so that it appears exactly like the example above.



11. Click on the 'Advanced' tab. Complete your screen so that it appears exactly like the example above.

12. Click 'OK' to complete the configuration.

13. To begin your EasyChair Online Demo be sure you are currently connected to the Internet, then double click on the 'EasyChair' icon that is now on your desktop. You will be prompted to enter a 'username' and 'password' (both will be provided to you by the salesperson giving the demo.)